

Daventry

28 High Street, Daventry, NN11 4HU

T: 01327 879869

Offices also located in Northampton

stonhills.co.uk



55 Braunston Road, Daventry
NN11 9BY

Guide price £176,000



Entered via a solid wooden door with glazed panels into:

Entrance Hall
Spacious entrance hall with space for cloaks. Coving to ceiling. Door through to the lounge.

Lounge
12'6 x 10'2
Bay Upvc double glazed window to the front aspect. Coving to ceiling. Archway through to the dining room.

Dining Room
13'7 x 11'2
Stairs ascending to the first floor accommodation. Coving to ceiling. Radiator. UPVC double glazed French doors to the rear garden. Door to the kitchen.

Kitchen
9'1 x 7'6
Fitted with a range of eye and base level units with rolled edge work surfaces over, tiling to water sensitive areas. Electric oven with stainless steel extractor fan over. Inset stainless steel drainer/sink unit with mixer tap over. Upvc double glazed bay window to side aspect. Tiled flooring. Archway to the utility room.

Utility Room
7'7 x 5'10
Space and plumbing for washing machine and fridge freezer. Wall mounted boiler. Tiled flooring.

Landing
Access to loft (with ladder). Doors to all upstairs accommodation. Coving to ceiling.

Bedroom One
12'5 x 10'7
Character cast iron fireplace. Radiator. Two Upvc double glazed windows to front aspect.

Bedroom Two
11'6 x 8'6
Another double bedroom with Upvc double glazed window to rear aspect. Single panel radiator.

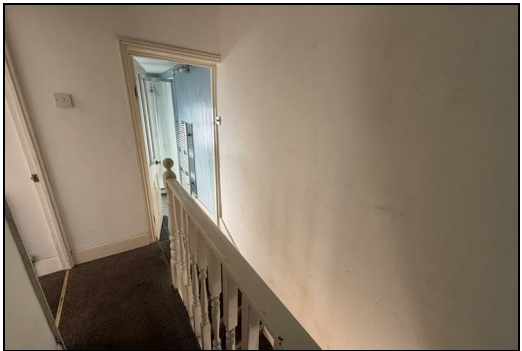
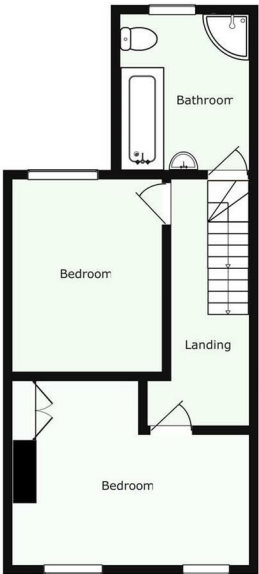
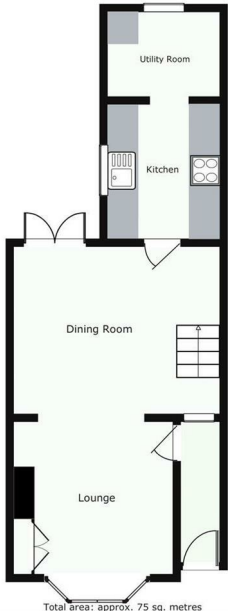
Bathroom
9'2 x 7'7
Fitted with a white four piece suite comprising of low level WC, pedestal wash hand basin, panel bath and a fully tiled shower cubicle with plumbed in shower. Opaque frosted Upvc double glazed window to rear aspect.

Outside -
Front - A low maintenance frontage which has paved pathway leading to the front door. Enclosed to the front boundary by hedging.

Rear - A good sized rear garden which has paving directly to the rear of the property. The remainder of the garden is well established, has a good sized lawned area and benefits from a southerly aspect. Enclosed by a combination of timber fencing to boundaries.

| Energy Efficiency Rating | | |
|---|-------------------------|-----------|
| | Current | Potential |
| Very energy efficient - lower running costs | | |
| (92 plus) A | | |
| (81-91) B | | |
| (69-80) C | | |
| (55-68) D | | |
| (39-54) E | | |
| (21-38) F | | |
| (1-20) G | | |
| Not energy efficient - higher running costs | | |
| England & Wales | EU Directive 2002/91/EC | |

| Environmental Impact (CO ₂) Rating | | |
|---|-------------------------|-----------|
| | Current | Potential |
| Very environmentally friendly - lower CO ₂ emissions | | |
| (92 plus) A | | |
| (81-91) B | | |
| (69-80) C | | |
| (55-68) D | | |
| (39-54) E | | |
| (21-38) F | | |
| (1-20) G | | |
| Not environmentally friendly - higher CO ₂ emissions | | |
| England & Wales | EU Directive 2002/91/EC | |



Zoopla.co.uk

THE NATIONAL ASSOCIATION OF ESTATE AGENTS
NAEA
ESTATE AGENTS

Ombudsman
www.oea.co.uk

rightmove.co.uk
The UK's number one property website

Appliances: Stonhills have not tested any equipment, fittings for services and so cannot verify they are in working order. The buyer is advised to obtain verification from their Solicitor or Surveyor. Measurements are for guidance only and are approximate. The buyer is therefore advised to check measurements if they are required for any other purpose e.g. fitted carpets, furniture, etc.